

Citrus College

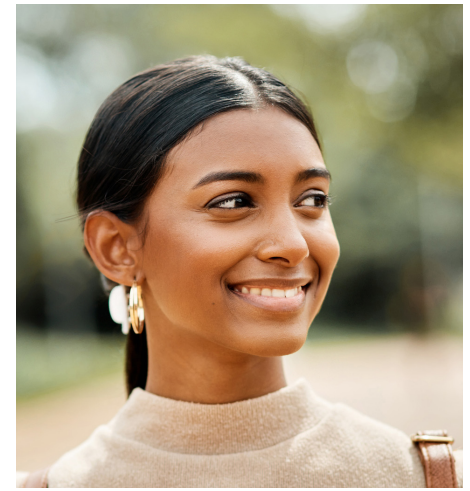
International Student Health Insurance Plan 2024-2025

Eligibility

All International students enrolled at your school are eligible for and are required to purchase this insurance plan. International students who have been approved for permanent residency are not eligible.

What's Included?

- Access to 24-hour Medical and Mental Health Telemedicine Services.
- Coverage when traveling
- Academic Emergency Services*



Benefits

(Deductible applies unless otherwise stated below)

	PARTICIPATING PROVIDER YOU WILL PAY:	NON-PARTICIPATING PROVIDER YOU WILL PAY:
Benefit Maximum Per Person, Per Policy Year	\$250,000	
Deductible Per Person, Per Policy Year	\$0	
Out-of-Pocket Maximum Per Person, Per Policy Year	\$10,000 per person, per policy year	
Physicians Office Visits	\$20 Copayment per visit (copay waived at campus health center)	20%
Treatment at Urgent Care Facility	\$35 Copayment per visit	20%
Hospital and Physician Outpatient Services	\$250 Copayment per visit	20%
Inpatient Hospital Services	\$250 Copayment per visit	20%
Emergency Hospital Services	\$20 Copayment per visit (copay waived at campus health center)	20%
Prescription Drugs Limited to a 31-day supply for initial fill or refill Including oral contraceptives and devices	100% after a Generic: \$10 Copayment Brand-Name: \$30 Copayment Injectables: \$50 Copayment	
Routine Preventive Care Services For more information, please visit healthcare.gov/preventive-care-benefits	Up to a Coverage Year Maximum of \$250	

More Information

For full details of participation in the plan, please view the complete brochure online at: citruscollege.myahpcare.com

Questions

To view Frequently Asked Questions or submit a request, please visit: help.ahpcare.com

Insurance ID Card

To access your ID card, please [click here](#).

This is for informational purposes only and is neither an offer of coverage nor medical advice. It contains only a partial, general description of plan benefits and programs and does not constitute a contract. Covered Expenses are subject to plan maximums, limitations, and exclusions as described in the Policy. The PPO network is **Blue Cross Blue Shield PPO**.

Visit geobluestudents.com to find a provider in the Blue Cross Blue Shield PPO Network.

Rates & Coverage Periods

	ANNUAL 08/01/24 - 07/31/25	FALL 08/01/24 - 01/31/25	LATE FALL 10/01/24 - 01/31/25	WINTER 01/01/25 - 01/31/25	SPRING 02/01/25 - 07/31/25	LATE SPRING 04/01/25 - 07/31/25	SUMMER 06/01/25 - 07/31/25
Student	\$1,518.00	\$759.00	\$506.00	\$126.50	\$759.00	\$506.00	\$253.00
Spouse/Domestic Partner	\$4,185.00	\$2,092.50	\$1,395.00	\$348.75	\$2,092.50	\$1,395.00	\$697.50
One Child	\$2,124.00	\$1,062.00	\$708.00	\$177.00	\$1,062.00	\$708.00	\$354.00
Two or More Children	\$4,248.00	\$2,124.00	\$1,416.00	\$354.00	\$2,124.00	\$1,416.00	\$708.00

To view all enrollment and coverage periods available, please visit citruscollege.myahpcare.com

*Academic Emergency Services and AD&D coverage are underwritten by 4 Ever Life International Limited and administered by Worldwide Insurance Services, LLC, separate and independent companies from Academic HealthPlans, Inc. (AHP), a Risk Strategies Company dba Academic Health Insurance Services.

This document contains a summary of your school's student health insurance policy benefits and restrictions as of the date of its publication; the summary document may differ from the benefits in the approved policy of insurance. The final policy may be pending approval by applicable federal and state regulatory authorities. The final approved policy of insurance is accessible upon approval at citruscollege.myahpcare.com.

Academic HealthPlans, Inc. (AHP), a Risk Strategies Company dba Academic Health Insurance Services is an independent company that provides program management and administrative services for the student health plans of GeoBlue. CA License #0H64806