

# Santa Barbara City College

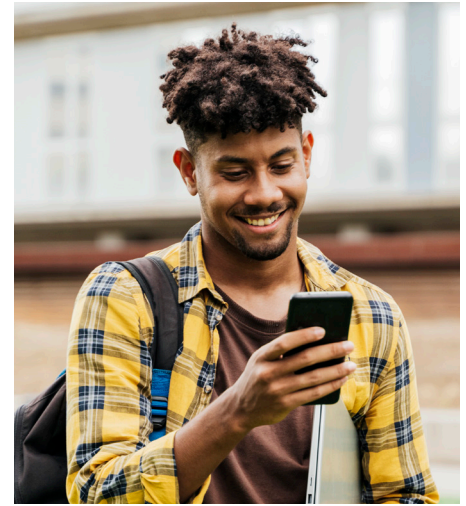
## International Student Insurance Plan 2024-2025

### Eligibility

All International students with an F-1 visa and Santa Barbara City College I-20 are eligible for and are required to purchase this insurance plan. No other students regardless of visa type or residency status are eligible.

### What's Included?

- GeoBlue is the Preferred Provider and will provide maximum benefits at lowest cost
- Telehealth solutions through AcademicLiveCare (ALC)
- 100% coverage at Student Health Services
- Vision coverage through to Academic Vision Care (AVC)
- 80% Coinsurance for approved prescription medications
- Travel coverage through Academic Emergency Services\*



### More Information

For full details of participation in the plan, please view the complete brochure online at: [sbcc.myahpcare.com](http://sbcc.myahpcare.com)

### Questions

To view Frequently Asked Questions or submit a request, please visit: [help.ahpcare.com](http://help.ahpcare.com)

### Insurance ID Card

To access your ID card, please visit [sbcc.myahpcare.com/additionalresources](http://sbcc.myahpcare.com/additionalresources)

This is for informational purposes only and is neither an offer of coverage nor medical advice. It contains only a partial, general description of plan benefits and programs and does not constitute a contract. Covered Expenses are subject to plan maximums, limitations, and exclusions as described in the Policy. The PPO network is **GeoBlue**.

### Benefits

(Deductible applies unless otherwise stated below)

	IN-NETWORK PROVIDER YOU WILL PAY	OUT-OF-NETWORK PROVIDER YOU WILL PAY AT LEAST
Maximum Benefit Per Person, per Policy Year		\$500,000
Deductible Per Person, per Policy Year		\$0
Out-of-Pocket Maximum Per Person, per Policy Year		\$2,500
Physician Office Visits (Copay waived with referral from campus health center)	\$20 Copay per visit	20%
Treatment at an Urgent Care Facility	\$20 Copay per visit	20%
Hospital Visit	\$50 Copay per visit	20%
Emergency Hospital Services (Copay waived if admitted)	\$100 Copay per visit	20%
Prescription Drugs	80% (contraceptives covered at 100%)	
Preventive Care For more information, visit <a href="http://healthcare.gov/preventive-care-benefits">healthcare.gov/preventive-care-benefits</a>	100%	80%

### Coverage Periods & Rates

	FALL 08/11/2024 - 12/31/2024	SPRING 01/01/2025 - 06/02/2025	SUMMER 06/03/2025 - 08/16/2025
Student	\$882.50	\$882.50	\$353.00
Spouse/Domestic Partner	\$3,157.50	\$3,157.50	\$1,263.00
One Child	\$1,261.25	\$1,261.25	\$504.50
Two or More Children	\$2,522.50	\$2,522.50	\$1,009.00

\*Academic Emergency Services and AD&D coverage are underwritten by 4 Ever Life International Limited and administered by Worldwide Insurance Services, LLC, separate and independent companies from Academic HealthPlans, Inc. (AHP), a Risk Strategies Company, dba Academic Health Insurance Services.

This document contains a summary of your school's student health insurance policy benefits and restrictions as of the date of its publication; the summary document may differ from the benefits in the approved Certificate of insurance. The final Certificate may be pending approval by applicable federal and state regulatory authorities. The final approved Certificate of insurance is accessible upon approval at [sbcc.myahpcare.com](http://sbcc.myahpcare.com).

Academic HealthPlans, Inc. (AHP), a Risk Strategies Company, dba Academic Health Insurance Services, is an independent company that provides program management and administrative services for the student health plans of GeoBlue. CA License #0H64806

AHP (24) GeoBlue-SBCC