

Ohio Wesleyan University 2024-2025 Student Health Insurance Plan Resources

Your Student Health Insurance Plan through Wellfleet provides a nationwide PPO network of comprehensive medical care. Benefits of the Student Health Insurance Plan include:

- A \$250 Deductible per person will apply for the plan year for In-Network Providers
- Office visit Copays are \$25 per visit and Deductible waived
- Access to medical and mental health telemedicine services
- Pharmacy Copays are \$20 for Tier 1, \$40 for Tier 2, \$60 for Tier 3 and 50% for specialty drugs



Telehealth

- AcademicLiveCare provides virtual visits 24/7
- See board-certified physical and behavioral health professionals from the comfort of your own home
- Telehealth is commonly used for coughs & colds, headaches, strep throat, anxiety & depression, therapy & counseling, or general wellness
- To view how to sign up and schedule an appointment, [click here](#).

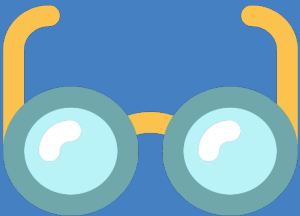
Dental Coverage

- Optional Dental Coverage!
- Cigna is the insurance carrier and offers a large national PPO network
- Save by using a PPO provider
- Know in advance how much is covered
- No ID Card needed when visiting the dentist
- To view Cigna's Dental options or enroll, [click here](#).



\$0 Copay Benefit

- All medications, including specified over the counter items (e.g., aspirin, contraceptives, folic acid, iron), included on the Wellfleet Rx Essential Health Benefits Zero Copay table are covered at zero Copay if the member has a valid prescription.
- To view the specific drug list and any specified age ranges, [click here](#).



ID Cards

A welcome email will be sent after enrollment and will direct students to Wellfleet to create an account. ID cards can be viewed and printed online.

To log in or create an account, [click here](#).



View your benefits online at owu.myahpcare.com