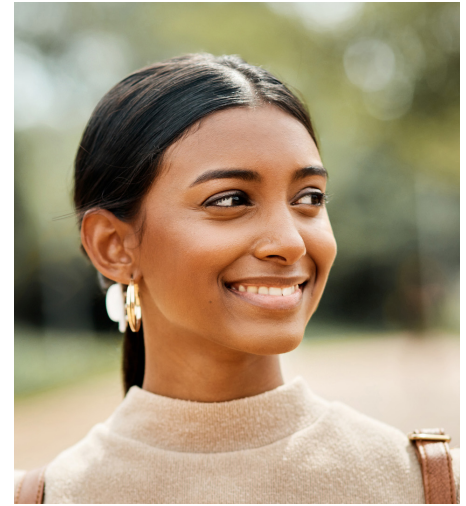


The University Of The Arts

Student Health Insurance Plan 2023-2024

Eligibility

All registered undergraduate and graduate students taking six (6) or more credit hours are required to complete the health insurance information form at uarts.edu/students/health-insurance-universityarts either to opt into the insurance provided through the University of the Arts and Academic HealthPlans or opt out and provide proof of health insurance coverage. Dependent coverage is not available.



Benefits (deductible applies unless otherwise stated below)

	IN-NETWORK PROVIDER <small>Payments are based on the Negotiated Charge</small>	OUT-OF-NETWORK PROVIDER <small>Payments are based on the Recognized Change</small>
Benefit Maximum <small>Per Insured Person, per Policy Year</small>	Unlimited	
Deductible <small>Per Insured Person, per Policy Year</small>	\$ 500	\$ 1,000
Out-of-Pocket Maximum <small>Per Insured Person, per Policy Year</small>	\$ 6,600	\$ 7,600
Hospital Room and Board	100% after a \$500 Copayment per admission	60% per admission
Inpatient/Outpatient Surgery	80%	60%
Physician, Specialist including Consultants Office Visits	100% after a \$25 Copayment per visit	60% per visit
Diagnostic Testing	80%	60%
Hospital Emergency Room	80% per visit	80% per visit
Outpatient physical, occupational, speech, and cognitive therapies	80% per visit	60% per visit
Preventive Care Services <small>For more information, please visit healthcare.gov/preventive-care-benefits/</small>	100% (deductible waived)	60%
Prescription Drug, includes specialty drugs. Up to 30-day supply (deductible waived)	At pharmacies contracting with Aetna 100% after a Preferred Generic Drug: \$20 Copayment Preferred Brand-Name Drug: \$30 Copayment Non-Preferred Brand-Name Drug: \$50 Copayment	100% after a Preferred Generic Drug: \$20 Copayment Preferred Brand-Name Drug: \$30 Copayment Non-Preferred Brand-Name Drug: \$50 Copayment

More Information

For full details of participation in the plan, please view the complete brochure online at: uarts.myahpcare.com

Questions

To view Frequently Asked Questions or submit a request, please visit: help.ahpcare.com

Insurance ID Card

To access your ID card, please visit uarts.myahpcare.com/additionalresources

This is for informational purposes only and is neither an offer of coverage nor medical advice. It contains only a partial, general description of plan benefits and programs and does not constitute a contract. Covered Expenses are subject to plan maximums, limitations, and exclusions as described in the Policy. The PPO network is **Aetna PPO**.

Coverage Periods & Cost

	ANNUAL 08/15/23 - 08/14/24	SPRING/SUMMER 01/01/24 - 08/14/24
Student	\$ 4,861	\$ 3,015

To view all enrollment and coverage periods available, please visit uarts.myahpcare.com.

This document contains a summary of your school's student health insurance policy benefits and restrictions as of the date of its publication; the summary document may differ from the benefits in the approved policy of insurance. The final policy may be pending approval by applicable federal and state regulatory authorities. The final approved policy of insurance is accessible upon approval at uarts.myahpcare.com.

Academic HealthPlans, Inc. (AHP) is an independent company that provides program management and administrative services for the student health plans of Aetna.