

Keep your smile healthy and bright

With a dental plan from Anthem



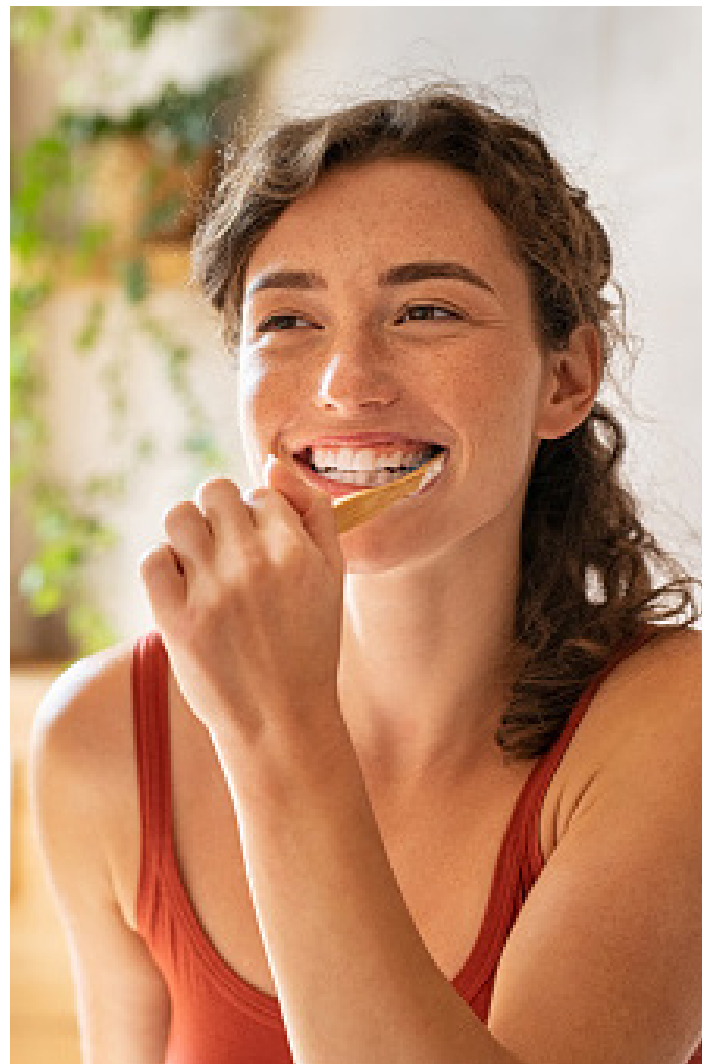
Keeping up with dental checkups is just as important now as when you were a kid. Regular checkups not only keep your teeth healthy, but they also can detect more serious health concerns.¹ That's why we've created a dental plan for busy UNR students like you.

Enrollment in our dental plan is voluntary to all University of Nevada, Reno registered international and medical students taking one or more credits and all graduate students taking six or more graduate credit hours. Covered students may also enroll their dependents.

Find a dentist, check costs, and ask questions online

Our dental plan includes a wide range of resources and tools to make it easier to keep your teeth healthy. This includes:

- **The SydneySM Health app** – Find dentists in your plan and view claims from your phone.
- **A Dental care cost estimator** – Look up costs for common procedures and treatments from dentists in your plan's network, so you know what to expect.
- **The TeleDentists[®]** – Live chat or video visit with a board-certified dentist, 24/7 by going to **Find Care** and searching **THE TELEDENTISTS**.
- **A dental health risk assessment** – This quiz can help you better understand your oral health and risk factors for tooth decay, gum disease, and oral cancer.



View our extensive network of dental care providers

You can visit [anthem.com/find-care](https://www.anthem.com/find-care) to find a dental care provider near you.

Dental benefits at a glance²

School session	Effective dates	Plan cost
Annual	8/15/24 to 8/14/25	Student: \$654.96 Spouse: \$916.80 Children: \$916.80

Plan details

Benefit information	Dentists in your plan	Dentists not in your plan
Annual maximum	\$1,500 per person	\$1,500 per person
Annual deductible Deductible waived for diagnostic and preventive services	\$50 per individual \$150 per family	\$50 per individual \$150 per family
Diagnostic and preventive services Routine cleanings, X-rays, fillings, simple extractions	0% coinsurance	0% coinsurance
Basic restorative services Consultation, amalgam fillings, space maintainers	20% coinsurance	20% coinsurance
Major restorative services Crowns, bridges, dentures, oral surgery, root canals	50% coinsurance	50% coinsurance
Nonsurgical periodontics See plan for specifics	20% coinsurance	20% coinsurance

Coinsurance is the amount you pay for services.



Enroll today

Please visit unr.myahpcare.com between July 1, 2024, and September 9, 2024 to get started.



¹ University of Washington Dentistry: 5 Reasons to Visit the Dentist (February 28, 2022); thewholeuw.edu.

² This is not a contract; it is a partial listing of benefits and services. All covered services are subject to the conditions, limitations, exclusions, terms, and provisions of your certificate of coverage. In the event of a discrepancy between the information in this summary and the certificate of coverage, the certificate will prevail.

In addition to using a telehealth service, you can receive in-person or virtual care from your own doctor or another healthcare provider in your plan's network. If you receive care from a doctor or healthcare provider not in your plan's network, your share of the costs may be higher. You may also receive a bill for any charges not covered by your health plan.

Sydney Health is offered through an arrangement with Carelon Digital Platforms, a separate company offering mobile application services on behalf of your health plan.

Anthem Blue Cross and Blue Shield is the trade name of Rocky Mountain Hospital and Medical Service, Inc. HMO products underwritten by HMO Colorado, Inc., dba HMO Nevada. Independent licensees of the Blue Cross and Blue Shield Association. Anthem is a registered trademark of Anthem Insurance Companies, Inc.